

CSX Transportation McLaren Mine Wetland Mitigation



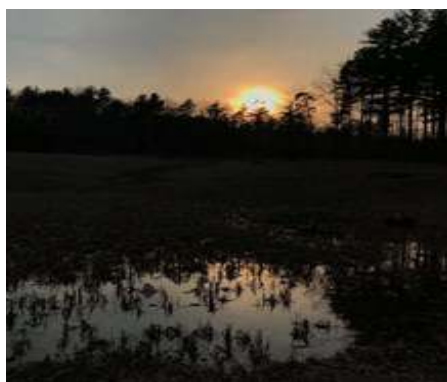
NEED ADDRESSED:

On behalf of CSX Transportation, Inc., Working Lands Investment Partners conducted a wetland mitigation restoration to compensate for the lost wetland acreage and reduced wetland functions and values associated with the construction and operation of the Catskill Second Mainline Project in Greene County, NY. Compensatory mitigation was completed for a total of 0.61 acres of impacted wetland under the jurisdiction of the US Army Corps of Engineers (USACE). Of the 0.61 acres of permanent wetland impact, 0.58 acres are under the jurisdiction of the New York State Department of Environmental Conservation (NYSDEC), and mitigation was performed to compensate for these impacts.



SOLUTION:

Over a period of several months in 2016, earth moving equipment was brought in to excavate and grade the mine shale pit into the designed wetland habitats. Thousands of cubic yards of rock, debris and soil were excavated. Loose gravels were gently graded to blend with the perimeter elevations. Microtopography was introduced to the wetlands to provide refuge habitat for amphibians and hydrological supply for drier periods. Eight inches of topsoil was placed on the overall footprint. The NYSDEC nominated this wetland mitigation project for the Interstate Mining Compact Commission 2019 National Reclamation Award.



PARTNERSHIPS AND COMMUNITY INVOLVEMENT:

At Working Lands, we pride ourselves on community engagement and existing relationships with regulatory agencies across the U.S. For this project, WLIP worked closely with CSX, Greene County, NY, Town of Catskill, NY, the USACE and NYSDEC.

Working Lands Investment Partners (WLIP) has a long history of pioneering and implementing water and soil remediation, restoration, rehabilitation, and regeneration. Our ecosystem restoration work delivers economical, sustainable, and verifiable solutions that alleviate the negative impacts of ecological damage resulting from human activity.

DEDICATED TO SUSTAINABILITY • DRIVEN BY STEWARDSHIP • POWERED BY SCIENCE